



## MAS 90 AND MAS 200 NEWSLETTER

In This  
Issue:

**New StarShip  
Freight  
Module**

**New Option  
for Credit  
Card  
Processing**

**Contact Us**

### New StarShip Freight Module

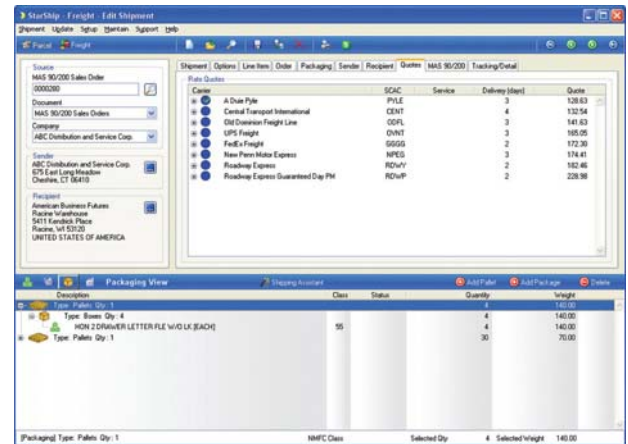
Sage Software recently announced a new module for your Sage MAS 90 or MAS 200 system – **Sage StarShip Freight**. The new module offers a fantastic solution for companies that frequently process freight shipments that are too large for small parcel carriers such as UPS or FedEx. These shipments are typically placed on pallets and handled by carriers such as Roadway or Yellow Freight. In this article, we'll take a quick look at how the new StarShip Freight module can help you swiftly convert orders into freight shipments and reduce shipping-related expenses.

#### Combining Orders for a Truckload of Savings

StarShip Freight allows you to query your MAS 90 or MAS 200 system to identify sales orders that need to be filled and shipped. Once an order is selected, StarShip Freight will also identify similar orders that can be shipped at the same time. In fact, you'll reduce shipping-related expenses with the ability to easily combine multiple orders into a single shipment.

#### Drag-and-Drop Simplicity

Once the orders are selected, the line item detail is automatically retrieved. StarShip Freight features a *Shipping Assistant* that allows you to simply drag-and-drop the line items into packages. Once packages are created, you drag-and-drop packages onto pallets. To eliminate errors and speed data entry, the Shipping Assistant has the ability to remember packaging scenarios and quantities from previous shipments and make "auto-pack" suggestions for future transactions. When all pallets have been created, a simple click takes you to Freightquote.com to shop for the best carrier rates.



Shipping Assistant packages items in the most favorable configuration.

#### Freightquote Dot Who?

Freightquote.com is a provider of web-based freight transportation management services. From a single location, you can compare quotes from top carriers, access transit times, and even choose a carrier, schedule a pick up and track your shipments. They leverage combined customer volume with carrier relationships to bring cost-effective freight options to small businesses, allowing you to make more informed decisions when selecting a carrier to meet your needs and budget.

#### What If I Already Own StarShip?

StarShip will continue to support small parcel shipments so there is no impact on current MAS 90 or MAS 200 customers currently using StarShip. StarShip Freight runs parallel to the current version of StarShip as an additional module that supplements your small package shipping process. To distinguish between the two, the small package solution will be referred to as **StarShip Parcel**. However it's important to note that you are NOT required to own StarShip Parcel in order to purchase StarShip Freight.



[Contact us](#) for detailed pricing information or click below to watch a self-guided online demo.

[Click Here](#) for a self-guided online tour of StarShip Freight

# New Option for Credit Card Processing

There's an old adage that says "Cash is King" ... but recent trends suggest it may no longer be the case. According to The Nilson Report (Issue 889, October 2007), the volume of credit card transactions continue to rise with more than \$2 trillion in goods and services purchased in 2007. What's more, Americans are expected to charge \$3.9 trillion to credit cards and \$1.4 trillion to debit cards per year by 2009. It's no doubt that if your business isn't already offering customers the convenience of credit card payments, you need to begin soon or risk losing sales to competitors. And if you already accept them, you'll be happy to learn that Sage Software has announced a new **Credit Card Processing Module** and complete payment solution for your Sage MAS 90 and MAS 200 ERP system.

## No More Duplicate Data Entry or Manual Reconciliation

The seamless integration allows you to process credit card transactions directly from within the Sage MAS 90 or 200 Sales Order and Accounts Receivable modules as well as the .store and .order e-Business Manager applets. All transaction information, such as authorization codes, is stored in your system **eliminating the need for duplicate data entry or manual reconciliation**. In addition, the transactions are processed through Sage Payment Solutions gateway offering you a complete, one-stop credit card payment solution.



## What is Sage Payment Solutions?

Sage Payment Solutions is a division of Sage Software that makes it easy for MAS 90 and 200 customers to accept electronic payments including credit cards, ACH processing, gift and customer loyalty cards, electronic check services, and much more. Because transactions are processed in-house by Sage Payment Solutions Division rather than a 3<sup>rd</sup> party, credit card transaction fees are significantly reduced and the savings are passed onto Sage Software customers. Even if you're

already accepting credit card payments, you can switch to Sage Payment Solutions and save money (see info below for a free estimate and cost analysis).

## Of Course It's Secure

You can offer your customers piece of mind in knowing that the Sage Solution offers strict compliance with the Visa and MasterCard Payment Card Industry (PCI) data security standard. Other security features include data encryption, Secure Socket Layer (SSL), Credit Verification Value (CVV and CVV2), and multiple address verification for credit card authentication.

## Other Information

Sage Payment Solutions offers processing for Visa®, MasterCard®, American Express®, Discover®, Diners Club®, JCB, Debit/ATM, and private label cards for retail, mail order/telephone order and Internet businesses. The new module is delivered via Service Update 10 for Sage MAS 90 and 200 Version 4.2. Upon the release of version 4.3, Credit Card Processing powered by Sage Payment Services will be added to the Sage MAS 90 and 200 product CDs.

**Note:** If you already own the credit card module with PCCCharge, you can easily switch to the new module using your same product key. Contact us for assistance or to discuss and evaluate your credit card processing needs.

## Free Analysis

Sage Payment Solutions is offering a free analysis — a \$150 value — that will compare how much you are currently spending on processing fees and how much you can save by switching to the new Sage MAS credit card program.

To request your free analysis, visit:

[www.sagepayments.com/ApplyToday.aspx](http://www.sagepayments.com/ApplyToday.aspx) or you can call **(800) 742-3975**.

CERTIFIED PUBLIC ACCOUNTANTS | BUSINESS & FINANCIAL ADVISORS

**REDW**  
Technologies LLC

*At REDW, integrity counts.*

6401 Jefferson Street NE | Albuquerque, NM 87109 | [jcavanaugh@redw.com](mailto:jcavanaugh@redw.com) | (505) 998-3200 | [www.redw.com](http://www.redw.com)